

VILLA FLA 32

TOTAL AREAS

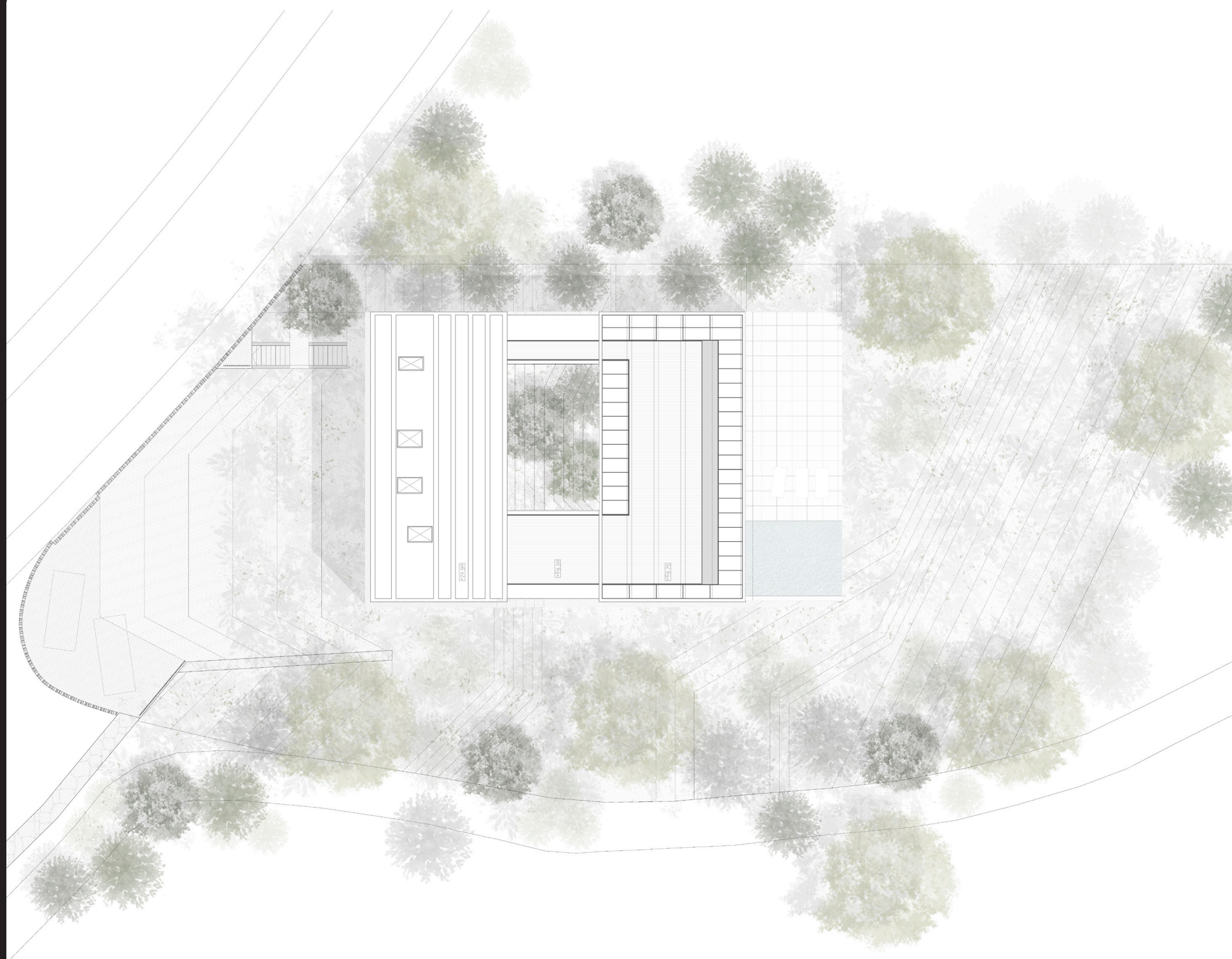
plot area	1.927,00 m ²
total built-up area	1.570,75 m²
built-up area house	1.227,05 m ²
access area	343,70 m ²
free garden area	1.034,85 m²

BUILT-UP AREA EXTERIOR HOUSE

e01	rooftop access walkway	08,70 m ²
e02	rooftop	96,80 m ²
e03	garden terrace	27,00 m ²
e04	terrace swimming pool	75,50 m ²
e05	porche swimming pool	101,85 m ²
e06	swimming pool	88,15 m ²

ACCESS AREA

e07	access area	343,70 m ²
-----	-------------	-----------------------



FLA 32 | PLOT



0 2 4 10
ESC 1 | 200

Ref. 01/23

VILLA FLA 32 | URB. FLAMINGOS | P32 BENAHAVÍS (MÁLAGA). PROMOTES FLAMINGOS GOLF & BEACH VILLAGE S.L.

This graphic documentation is for commercial use and is not contractual, and may be subject to possible modifications due to commercial, technical, administrative or any other kind of needs. The furniture shown, as well as the vegetation or other ornamental elements, are shown for decorative purposes and are not supplied with the property except when expressly included in the specifications.

VILLA FLA 32

GROUND FLOOR

total built-up area	330,75 m²
total useful area	283,65 m²
b01	garage - access 84,40 m ²
b02	hall - distributor 29,45 m ²
b03	stairs first floor 07,15 m ²
b04	toilet 02,60 m ²
b05	storage 04,85 m ²
b06	kitchen 39,00 m ²
b07	dining room 33,80 m ²
b08	living room 74,40 m ²
b09	exterior stairs 08,00 m ²

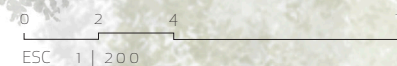
FIRST FLOOR

total built-up area	147,40 m²
total useful area	128,15 m²
p01	hall 11,60 m ²
p02	bedroom 01 24,25 m ²
p03	bedroom 02 13,65 m ²
p04	bedroom 03 13,65 m ²
p05	bathroom 05,70 m ²
p06	suite 34,70 m ²
p07	terrace suite 24,60 m ²

BASEMENT

total built-up area	350,90 m²
total useful area	310,80 m²
u01	covered porche 27,80 m ²
u02	guest suite 25,70 m ²
u03	bathroom 08,60 m ²
u04	activity room 77,90 m ²
u05	laundry - maintenance 19,50 m ²
u06	facilities room 31,05 m ²
u07	tank 25,65 m ²
u08	basement courtyard 18,15 m ²
u09	triple height courtyard 76,45 m ²

FLA 32 | GROUND FLOOR



Ref. 01/23

VILLA FLA 32 | URB. FLAMINGOS | P32 BENAHAVIS (MÁLAGA). PROMOTES FLAMINGOS GOLF & BEACH VILLAGE S.L.

This graphic documentation is for commercial use and is not contractual, and may be subject to possible modifications due to commercial, technical, administrative or any other kind of needs. The furniture shown, as well as the vegetation or other ornamental elements, are shown for decorative purposes and are not supplied with the property except when expressly included in the specifications.

VILLA FLA 32

GROUND FLOOR

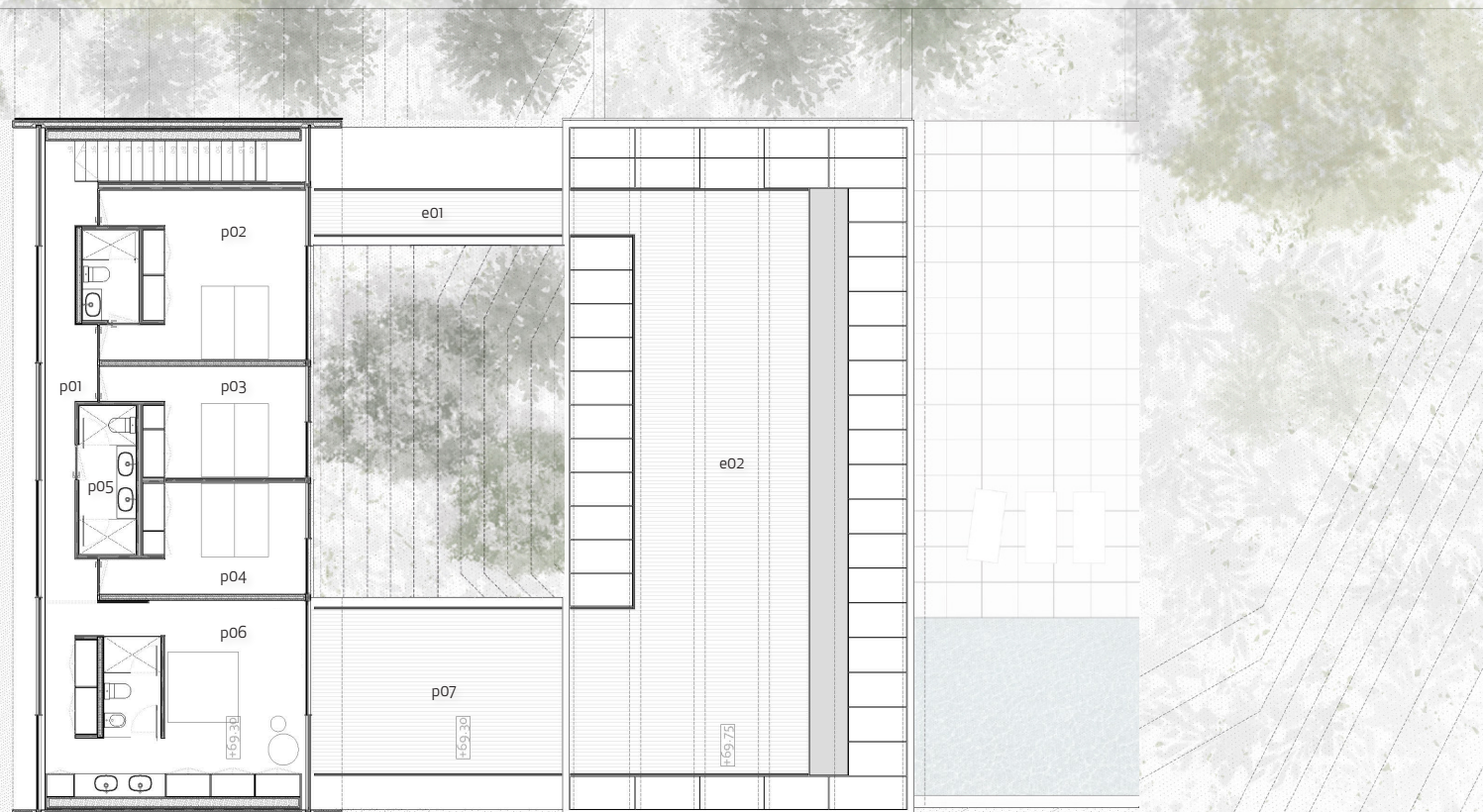
total built-up area	330,75 m²
total useful area	283,65 m²
b01 garage - access	84,40 m ²
b02 hall - distributor	29,45 m ²
b03 stairs first floor	07,15 m ²
b04 toilet	02,60 m ²
b05 storage	04,85 m ²
b06 kitchen	39,00 m ²
b07 dining room	33,80 m ²
b08 living room	74,40 m ²
b09 exterior stairs	08,00 m ²

FIRST FLOOR

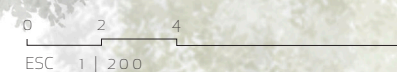
total built-up area	147,40 m²
total useful area	128,15 m²
p01 hall	11,60 m ²
p02 bedroom 01	24,25 m ²
p03 bedroom 02	13,65 m ²
p04 bedroom 03	13,65 m ²
p05 bathroom	05,70 m ²
p06 suite	34,70 m ²
p07 terrace suite	24,60 m ²

BASEMENT

total built-up area	350,90 m²
total useful area	310,80 m²
u01 covered porche	27,80 m ²
u02 guest suite	25,70 m ²
u03 bathroom	08,60 m ²
u04 activity room	77,90 m ²
u05 laundry - maintenance	19,50 m ²
u06 facilities room	31,05 m ²
u07 tank	25,65 m ²
u08 basement courtyard	18,15 m ²
u09 triple height courtyard	76,45 m ²



FLA 32 | FIRST FLOOR



Ref. 01/23

VILLA FLA 32 | URB. FLAMINGOS | P32 BENAHAVIS (MÁLAGA). PROMOTES FLAMINGOS GOLF & BEACH VILLAGE S.L.

This graphic documentation is for commercial use and is not contractual, and may be subject to possible modifications due to commercial, technical, administrative or any other kind of needs. The furniture shown, as well as the vegetation or other ornamental elements, are shown for decorative purposes and are not supplied with the property except when expressly included in the specifications.

VILLA FLA 32

GROUND FLOOR

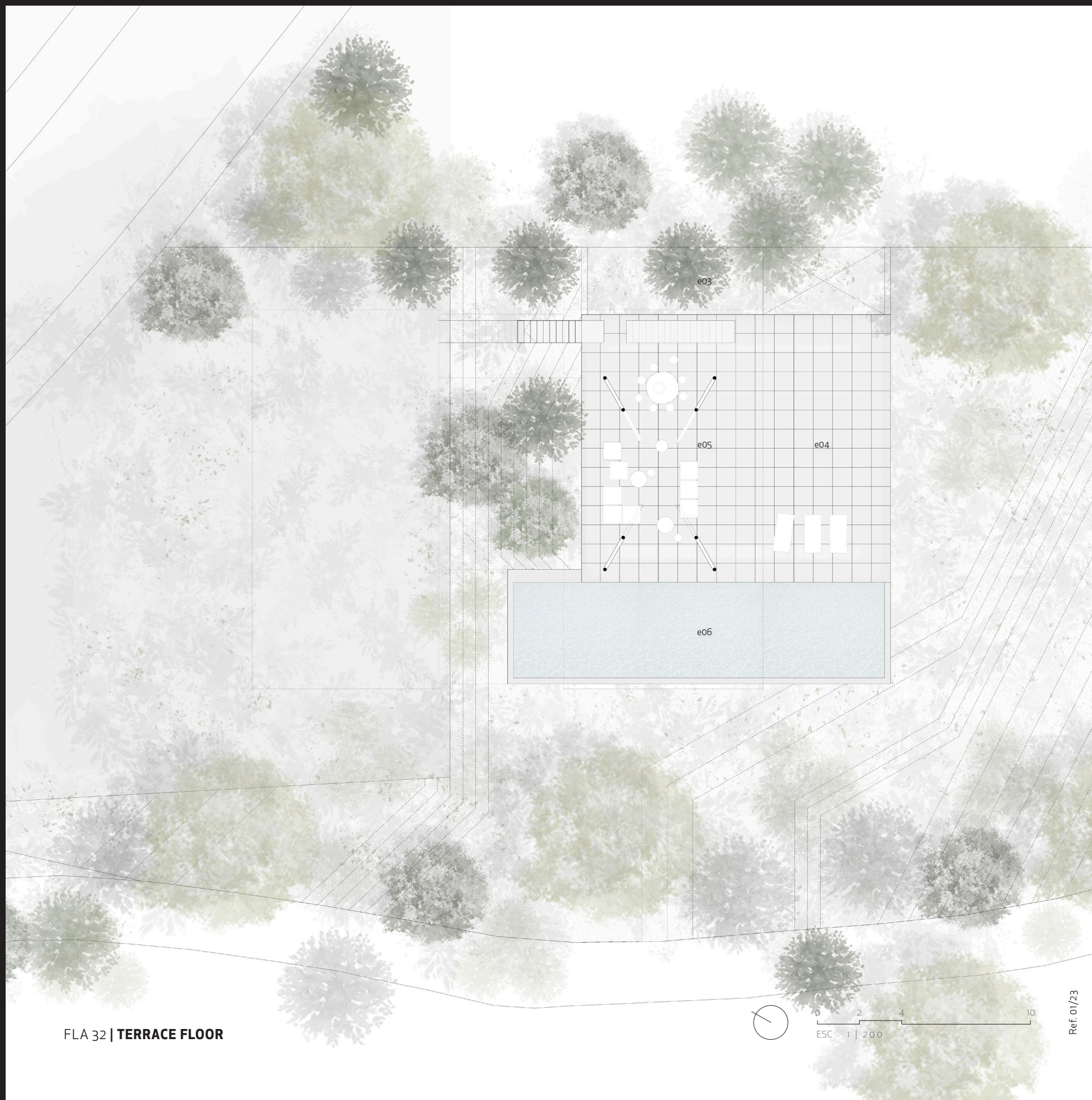
total built-up area	330,75 m²
total useful area	283,65 m²
b01 garage - access	84,40 m ²
b02 hall - distributor	29,45 m ²
b03 stairs first floor	07,15 m ²
b04 toilet	02,60 m ²
b05 storage	04,85 m ²
b06 kitchen	39,00 m ²
b07 dining room	33,80 m ²
b08 living room	74,40 m ²
b09 exterior stairs	08,00 m ²

FIRST FLOOR

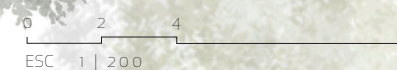
total built-up area	147,40 m²
total useful area	128,15 m²
p01 hall	11,60 m ²
p02 bedroom 01	24,25 m ²
p03 bedroom 02	13,65 m ²
p04 bedroom 03	13,65 m ²
p05 bathroom	05,70 m ²
p06 suite	34,70 m ²
p07 terrace suite	24,60 m ²

BASEMENT

total built-up area	350,90 m²
total useful area	310,80 m²
u01 covered porche	27,80 m ²
u02 guest suite	25,70 m ²
u03 bathroom	08,60 m ²
u04 activity room	77,90 m ²
u05 laundry - maintenance	19,50 m ²
u06 facilities room	31,05 m ²
u07 tank	25,65 m ²
u08 basement courtyard	18,15 m ²
u09 triple height courtyard	76,45 m ²



FLA 32 | TERRACE FLOOR



Ref. 01/23

VILLA FLA 32 | URB. FLAMINGOS | P32 BENAHAVIS (MÁLAGA). PROMOTES FLAMINGOS GOLF & BEACH VILLAGE S.L.

This graphic documentation is for commercial use and is not contractual, and may be subject to possible modifications due to commercial, technical, administrative or any other kind of needs. The furniture shown, as well as the vegetation or other ornamental elements, are shown for decorative purposes and are not supplied with the property except when expressly included in the specifications.

VILLA FLA 32

GROUND FLOOR

total built-up area	330,75 m²
total useful area	283,65 m²
b01	garage - access 84,40 m ²
b02	hall - distributor 29,45 m ²
b03	stairs first floor 07,15 m ²
b04	toilet 02,60 m ²
b05	storage 04,85 m ²
b06	kitchen 39,00 m ²
b07	dining room 33,80 m ²
b08	living room 74,40 m ²
b09	exterior stairs 08,00 m ²

FIRST FLOOR

total built-up area	147,40 m²
total useful area	128,15 m²
p01	hall 11,60 m ²
p02	bedroom 01 24,25 m ²
p03	bedroom 02 13,65 m ²
p04	bedroom 03 13,65 m ²
p05	bathroom 05,70 m ²
p06	suite 34,70 m ²
p07	terrace suite 24,60 m ²

BASEMENT

total built-up area	350,90 m²
total useful area	310,80 m²
u01	covered porche 27,80 m ²
u02	guest suite 25,70 m ²
u03	bathroom 08,60 m ²
u04	activity room 77,90 m ²
u05	laundry - maintenance 19,50 m ²
u06	facilities room 31,05 m ²
u07	tank 25,65 m ²
u08	basement courtyard 18,15 m ²
u09	triple height courtyard 76,45 m ²

